

Report 2016–2017

**Eastern Europe –
Global Area**

Table of Contents

01	Preface	03
02	Concept and Goals	05
03	Funding Measures, Events and Activities	07
04	Research Areas	13
05	The Scientific Advisory Board	18
06	EEGA Members	20
07	Structural Chart	25
	Contact	27
	Imprint	28

Preface

3

Since the approval of the Leibniz ScienceCampus “Eastern Europe – Global Area” (EEGA) in July 2016 and its opening in November 2016 news from Eastern Europe continue to be exciting. One may think of the positioning of countries in the course of the migration crisis; or of the strengthening of right-wing movements and populism across Europe; or of China’s “One Belt, One Road” initiative and the reactions to it in Central Asia and all over Eastern Europe; or of the increasing volume of Russia’s foreign trade: The picture is colourful and difficult to interpret. Those and many more events and developments call for an intensified engagement in research on the global interconnectedness of societies and economies in what we call Eastern Europe.

They underline not only the necessity of profound research programmes and collaborations of scholars worldwide but also demand an understanding of this region as a part of a world, which is constantly producing, balancing, profiting of, suffering from, and negotiating processes of globalisation. The Leibniz ScienceCampus EEGA considers actors, who are form or in relation with actors

from Eastern Europe in their mutual and multidimensional interactions. Eight institutional partners (universities, non-university and university research institutions) from three different German states form a platform to organise and support young researchers in creating interdisciplinary research questions with a focus on Eastern Europe’s changing role in current and historical globalisation processes. Beyond supporting the scholars’ networking, communicating research results to the public, particularly to multipliers from the media, is an important goal of EEGA.

This Leibniz ScienceCampus and its partner institutions look back at a first year full of numerous events, trainings, workshops, and grants for PostDocs and guest scholars as well as a range of networking activities with actors within and outside science.

We invite you to discover our various approaches, activities, and offers on the Campus. In addition, we would like to ask you to approach us at any time with your constructive criticism and perhaps become one of our cooperation partners.

Yours sincerely,



Prof. Dr. Sebastian Lentz
(Spokesperson of the Steering Committee)



Prof. Dr. Matthias Middell
(Spokesperson of the Steering Committee)



02 Concept and Goals

The Leibniz ScienceCampus model is the Leibniz Association's answer to the often-lamented parallel existence of university and non-university research ("pillarisation") in the German research system. Leibniz ScienceCampi promote cooperation on an equal footing between Leibniz institutions and universities in the form of thematically focused, complementary regional partnerships. The objective is to create networks to drive the respective research field and to strengthen the scientific environment for the relevant themes. The networks conduct strategic research, encourage interdisciplinarity in their topics, projects and methods, enhance the visibility of the respective location and hone its research profile (see: www.leibniz-gemeinschaft.de/en/research/leibniz-sciencecampi/)

The Leibniz ScienceCampus „Eastern Europe – Global Area“ (EEGA) is an overall integrative platform and collaborative research network that focuses on the development of new research perspectives on Eastern Europe's changing role in current and historical processes of globalisation. It supports and connects both senior and junior researchers from within and outside Eastern Europe at universities and research institutes. Moreover, it is committed to promoting knowledge transfer between science and the public.

EEGA's mission is to promote collaborative research and knowledge exchange through joint research activities and engagement projects, connecting senior and junior researchers at universities and research institutes, tailored audiences and the public with a focus on the self-reflexive understanding of Eastern Europe through globalisation projects.

EEGA brings together interdisciplinary knowledge and expertise from researchers affiliated with both, universities and research institutes, in the Leipzig-Jena-Halle science region. It focusses on protagonists, stakeholders, and their global interactions. Together with partners from the region, EEGA explores the fields of migration and mobilities; business strategies and political economies; cultural and intellectual perspectives and identities; and political integration in a changing global arena.

EEGA pursues four strategic goals:

1) The Leipzig, Halle and Jena science-region comprises of a high density of higher education and research institutions and renowned knowledge and expertise in the study of both Eastern Europe and globalisation. Providing an infrastructure and serving as a catalyst connecting universities, research institutes and individuals studying globalisation and/or Eastern Europe, EEGA integrates existing strengths and capabilities and builds bridges across disciplines and institutions towards synergetic and complementary collaboration.

2) The Leibniz ScienceCampus stimulates a researched discourse on Eastern Europe and promotes knowledge transfer between science and the public, and between researchers in Germany and abroad, particularly with scholars from Eastern European regions. Engagement and dissemination projects with both the public and specific audiences (e.g. journalism, political consulting) contribute to knowledge exchange and interaction between academia and society and enhance discussion culture. The exchange with partners (guest scholars, journalists, etc.) from Eastern Europe allows deepening the understanding of the region by combining internal and external approaches to making sense of the region.

3) EEGA pursues the objective of contributing to research capacity and network building within and outside academia. By promoting young researchers developing a career either within or outside academia, EEGA generates both scientists and experts in related fields. The Leibniz ScienceCampus provides a subsequent line of education that starts from Master's courses, comprises PhD research and training, and completes with promoting research by and further qualification for PostDocs with reflexive knowledge about societies in Eastern Europe for highly qualified young academics.

4) Within Leibniz Association, the ScienceCampus EEGA strengthens the focus area „Eastern Europe“ (see the establishment of the working group „Eastern Europe“ in 2014) and Area Studies in general by contributing its multi-disciplinary knowledge and expertise and sharing its broad range of experiences regarding research, network and knowledge exchange activities within the Leibniz community.



03 Funding Measures, Events and Activities



Signing the cooperation agreement in November 2016

Constitutive meeting of the Steering Committee of EEGA on 18 November 2016, © EEGA

Since its founding in July 2016, EEGA-partners have been working on the general publicity of EEGA in public and academic arenas. The Research Area Coordinators and the speakers of the Steering Committee participated in several scientific conferences at home and abroad to present the concept of EEGA and to match it with partner institutions.

8



↑

Opening EEGA in the Saxon
Academy of Sciences in January
2017, © EEGA

→

Presentation of EEGA Science-
Campus during the IAMO Forum
2017 in Halle (21–23 June 2017),
© EEGA

↓





Four European Studies students started as the EEGA-Campus-Team at the Leipzig university run called “RUNiversität” (finally ranked 6th in the competition), © EEGA

9

Postdoc Support

Distinct programmes and training workshops aim at bringing together young researchers from different regions studying Eastern Europe and support professional development for Postdocs within and outside academia.

EEGA@future: Postdoc-Grants

The EEGA supports one to six months stays of PostDocs at the partner institutions in the science region Leipzig-Halle Jena. Goals of such research residence may serve the preparation of an application for extended funding by a national or international science foundation or the preparation/development/finishing of publications. Joint applications and publications of Postdocs from several research backgrounds are highly appreciated. This also holds for small Postdoc-groups who want to organise international thematic workshops to sound and explore new thematic fields.

Eligible for applications are Postdocs from institutions that are related to the member institutions of EEGA through official cooperation agreements.

Since January 2017, the Leibniz ScienceCampus welcomed the following PostDocs:

- Alina Strugut (Berlin) – Research Area 1, six months stay
- Zinaida Vasilyeva (University of Neuchâtel) – Research Area 1, six months stay
- Romana Salageanu (Cluj-Napoca) – Research Area 5, six months stay

EEGA@interaction: Thematic Workshops and Conferences

EEGA offers open-rank and cross-institutional activities that create an efficient platform for excellent multi-disciplinary cooperation. Part of these collaborative activities are thematic workshops and conferences, including thematic writing retreats and discussion fora, organised by and for Postdocs.

10



↑

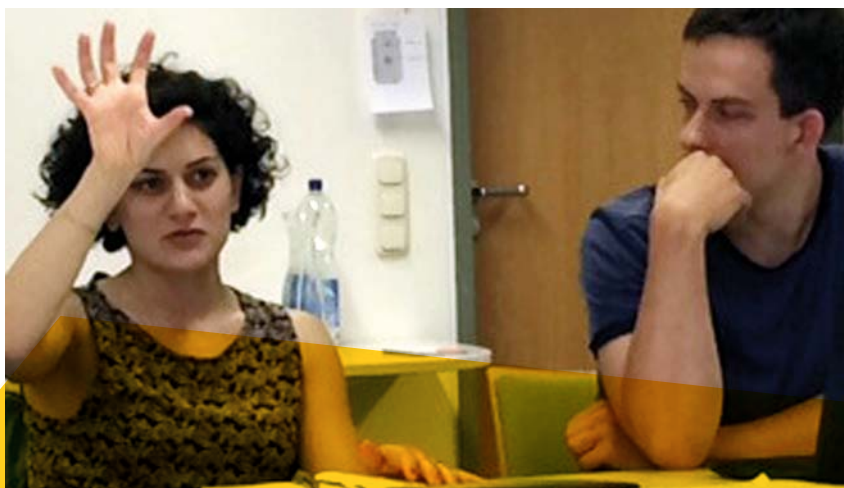
Project presentation at EEGA
Panel "Self-positioning of Eastern European Societies under the global condition" at Summer School "Making and Changing Spaces of Action under the Global Condition", organised by the Graduate School Global and Area Studies (GSGAS), in collaboration with the Flying University of Transnational Humanities (FUTH) (June 2017),
© EEGA



↑

Coachings for PostDocs about preparing and writing applications for research projects (June and July 2017). Both sessions gave insights into the world of applications and their evaluations with special focus on how to write project proposals together with researchers from Eastern Europe and Russia,
© EEGA

←



EEGA@innovation: Trainings and Soft Skills for Postdocs

EEGA offers trainings and courses strengthening skills for successful career development in neighbouring fields of academia. The workshops are designed for small groups of Postdocs and are planned by the participants themselves. Topics for trainings and workshops can range from expertise in developing funding applications to specific skill-sets for writing essays for publication in newspapers to forms of writing a scientific blog or newsletter.



↑
Writing Sweatshop for structured,
effective writing (July 2017), © EEGA

EEGA@enrichment: Invitation of guest researchers

The EEGA supports short-term (one to four days) and mid-term (one to four weeks) stays of visiting scholars from Eastern Europe as well as the invitation of prestigious guest scholars from other countries from Global and Area Studies and the disciplines involved. The stay should be used for guest lectures or other teaching formats in the MA- and PhD-programmes affiliated with the EEGA, workshops and networking meetings with junior and senior scholars in the EEGA, and collaboration in joint publication projects.

EEGA Guest Lecture
Prof. Alexander Semyonov
(Higher School of Economics,
St. Petersburg): "From Empire to
Nation? The Case of Imperial
Transformations of the Russian
Empire" (July 2017), © EEGA

→

EEGA has saluted the following guest scholars since 2017:

- Anna Novikov (Hebrew University of Jerusalem) – Research Area 2, three weeks stay
- Tobias Köllner (University of Magdeburg) – Research Area 4, two weeks stay
- Constantin Katsakioris (Bayreuth Academy of Advanced African Studies) – Research Area 2, two weeks stay
- Gal Kirn (Kulturlabor – Institute for cultural Inquiry, Berlin) – Research Area 4, one month stay

EEGA Guest Lecture
Prof. Margarita M. Balmaceda
(Seton Hall University and
Harvard University, USA):
"Chains of Value, Chains of Power:
Russian Energy, Value Chains and
the Remaking of Social Relations
from Vladivostok to Brussels "
(June 2017), © EEGA

↓



Teaching and Young Talents

- 12** EEGA provides a fully-fledged line of education on reflexive knowledge about societies in Eastern Europe for highly qualified young academics. It starts from Master's courses, comprises PhD research and training and completes with promoting research by and further qualification for Post-docs. EEGA also aims at qualifying scholars for a non-academic but close-to-science labour market.

Workshop on the creative development of innovative teaching and teaching formats with the help of „Design Thinking“ (July 2017), © EEGA



Communication with the Public and Multipliers

As a platform, EEGA promotes knowledge transfer between science and the public. Events for specific audiences, particularly multipliers such as journalists or consultants, ensure this mutually beneficial collaboration. EEGA organises EEGA@exchange, a series of Science Lounges that takes place twice a year.



First Science Lounge with Prof. Rainer Lindner (Schaeffler-Group, CEO for Eastern Europe): “The Russian economy between sanctions and globalization: Consequences for the world economy and German enterprises” (June 2017), © EEGA



EEGA@connections: Online Journal and Publications

EEGA closely cooperates with the e-journal Connections (<http://www.connections.clio-online.net/>). The journal unites a research community, which follows research questions all around the field of transnational entanglements. EEGA has its own column “EEGA in dialogue”, publishing news, calls for applications and for papers, events, and other news. EEGA publishes 2-3 “EEGA@connections” issues every year with reviews and working papers. Members, guest researchers and EEGA-Postdoc fellows can publish their project outlines and first findings here.

04 **Research Areas**

Mobilities and Migration Regimes in Eastern Europe 14 (Research Area 1)

Coordination: **Helena Flam** (University of Leipzig) and **Judith Miggelbrink** (Institute for Regional Geography)

The transformation of Eastern Europe has resulted in high levels of subnational territorial inequality, displacements and expulsions, as well as complex patterns of ethnic, cultural, religious and political identities and orientations. Stark contrasts of vibrant and dynamic places on the one hand and marginalized places on the other characterise the region. These trends have resulted in complex patterns of mobility, mobile and immobile groups as well as forms of control and flows. Research approaches take into account intersecting social, economic, cultural, political and infrastructural components. Five interdependent mobilities are distinguished here: corporeal travel of people, physical movements of objects, imaginative travel, virtual travel and communicative travel.



© Flam

EEGA presents an opportunity to identify, support and connect exciting new projects and research directions...

Helena Flam, Research Area Coordinator, Member of the Steering Committee



© Vasilyeva

The benefit of EEGA is to me that it provided me with a comfortable and stimulating environment for my research, gave opportunities to network with colleagues and benefit from their advises, to better understand the structure of research funding in Germany. The Writing Workshop was awesome ...

Zinaida Vasilyeva, PostDoc

Self-Positioning of Eastern Europe in a New World Order (Research Area 2)

Coordination: **Frank Hadler** (Leibniz Institute for the History and Culture of Eastern Europe) and **Matthias Middell** (Centre for Area Studies)

The end of the Cold War has been widely perceived as the starting point of changes to and within world order. The research area conceptualises »world order« as the result of multiple interventions by many actors that can be explored only by including various spatial scales and formats. It aims to stimulate the debate on the self-positioning of Eastern European states and societies by inviting area experts studying both Eastern Europe and different other world regions. The focus is on positioning strategies of Eastern European collective actors within this changing world (order), new spatial formats of political organisation emerging within Eastern Europe, and the region's engagement with other world regions.

Business Strategies and Frameworks of Political Economies (Research Area 3)

Coordination: **Sebastian Henn** (University of Jena), **Thomas Glauben** (Leibniz Institute of Agricultural Development in Transition Economies - IAMO) and **Thorsten Posselt** (Fraunhofer Center for International Management and Knowledge Economy)

This research area aims to further explore economic issues by addressing the following research fields and questions: Corporate coping strategies and state intervention, trade patterns and regional specialisations, in- and outward-bound foreign direct investments, translocal knowledge flows, evolution of new economic, and patterns of urban and regional resilience.



The benefit of EEGA is to me the impact of an interdisciplinary network platform, which corresponds to our global DNA as an international Fraunhofer Institute. Combined with applied science and our expertise in Central and Eastern Europe it maximizes opportunities for research, science and teaching about Eastern Europe...

Thorsten Posselt, Research Area Coordinator and Member of the Steering Committee

Cultural and Intellectual Perspectives and Identifications (Research Area 4)

Coordination: **Jürgen Heyde** (University of Halle-Wittenberg), **Yvonne Kleinmann** (University of Halle-Wittenberg/ Aleksander Brückner Center for Polish Studies) und **Stefan Troebst** (Leibniz Institute for the History and Culture of Eastern Europe)

As processes of globalisation in and for Eastern Europe have shaped the region for a long time, the EEGA research approaches reach back into the first era of globalisation around 1900 and to the emergence of Eastern Europe on the political map after World War I. The research area shifts the focus onto important, but as yet little researched questions by conceiving historical actors in Eastern Europe as active global players instead of just imagining the region as a mostly passive object of global developments. Exploring the cultural and intellectual manifestations of globalisation in and for the region, Eastern Europe will be conceptualised »on a global scale«. Based on this approach, the research area aims at overcoming perspectives on Eastern Europe that reproduce exceptionalism from within and »orientalisation« from the outside.

Eastern Europe in Times of Europeanisation and Diffusion

16 (Research Area 5)

Coordination: **Gert Pickel** (University of Leipzig) and **Holger Lengfeld** (University of Leipzig)

Around 1989/1991, the transition paradigm that forecasted Western models of state and economy becoming globally universal, proved to be mainstream among research, government and policy-making communities. Roughly 25 years later and under the impact of the Ukraine Crisis, the relevance of the once powerful paradigm has been contested. The spreading of new ideas, institutions, policies, models, or repertoires of behaviour, attitudes and values from their point of origin to new sites and Europeanisation as derivatives of broader processes of globalisation have impacted Eastern Europe – but not in the same manner, form, and with the same outcomes everywhere. This research area will explore actors in Eastern Europe between »uniqueness« and »normality« within Europe and the globalised world.



© Pickel

The benefit of EEGA is to me to bring young researchers to good science...

Gert Pickel, Research Area Coordinator and Member of the Steering Committee

The benefit of EEGA is to me being part of a cluster of possibilities for professional development that comprises professional support from scientific coordinators, high-level information and thoughts exchange, a rich intercultural environment, many resources and financial support...

Romana Salageanu, PostDoc



18 05 The Scientific Advisory Board

The Scientific Advisory Board, composed of five internationally renowned scholars appointed by the Board of Directors meeting once per year, advises the Leibniz ScienceCampus on all matters of research, research dissemination and quality management.

Olga Lomová (Charles University Prague, Disciplines: Linguistics, Literary studies)

© Lomova/ Charles University

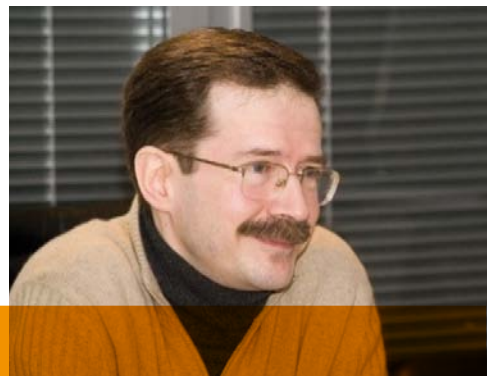


Research interests:

- > Pre-modern Chinese literature and literary aesthetics
- > intellectual transformation of China since late 19th century
- > Chinese modernisation in cross-cultural perspective
- > general issues of transdisciplinarity in humanities and social sciences

Andrei Yakovlev (Higher School of Economics, Moscow, Discipline: Economics)

© Yakovlev



Research interests:

- > industrial policy
- > corporate governance
- > political economy of social changes in transition and developing countries
- > state-business relations
- > public procurement

Gwendolyn Sasse (Director of the Centre for Eastern European and International Studies (ZOiS) Berlin, Discipline: Political Science)



© ZOiS
←

Research interests:

- > Post-communist transitions (with a particular focus on Ukraine)
- > Comparative democratisation and authoritarianism
- > Ethnic conflicts in Eastern Europe
- > Migration from and within Eastern Europe
- > EU eastward enlargement/Eastern Partnership

James Mark (University of Exeter, Discipline: History)



© Mark
→

Research interests:

- > oral history – the experience of Hungarian middle class under the Communist state
- > major political transformations and production of new public histories helping social groups to re-imagine their own pasts
- > memory of the second world war in Hungarian and Romanian communities in Transylvania

Judith Pallot (University of Oxford, Discipline: Human geography)



←
© Pallot

- > Professor Emeritus of the University of Oxford and Honorary Research Fellow in Russian and East European Centre of the University Department of Interdisciplinary Area Studies.
- > President of the British Association for Slavonic and East European Studies (until 2019)



06 EEGA Members

21

Fraunhofer Center for International Management and Knowledge Economy (IMW)

The Fraunhofer economists develop scientifically sound solutions to the challenges of globalisation to ensure the long-term success of clients and partners with a business and industry, research or society background. People, their environment and the reality of their lives are at the centre of the institute's international projects, networking activities, innovation projects and analyses. The institute and the minds that work there have proven expertise in the fields of internationalisation, innovation and technology management, innovation funding, strategy development, the knowledge economy and research marketing.

Contact

Fraunhofer Center for International Management and Knowledge Economy (IMW)
Neumarkt 9-19
04109 Leipzig
<https://www.imw.fraunhofer.de>

Prof. Dr. Thorsten Posselt

thorsten.posselt@imw.fraunhofer.de

Leibniz Institute for the History and Culture of Eastern Europe (GWZO)

The Leibniz Institute for the History and Culture of Eastern Europe (GWZO) at the University of Leipzig is a research institute committed to international cooperation and multidisciplinary approaches. It focuses on the comparative research into the history and culture of territories between the Baltic, the Black and the Adriatic Seas from the Early Middle Ages up to the present day. GWZO closely cooperates with a considerable number of scholarly institutes both, from East Central and Western Europe as well as other parts of the world.

Contact

Leibniz Institute for the History and Culture of Eastern Europe (GWZO)
Specks Hof (Eingang A)
Reichsstr. 4-6
04109 Leipzig
<http://research.uni-leipzig.de/gwzo/>

Prof. Dr. Stefan Troebst

stefan.troebst@leibniz-gwzo.de

22 Leibniz Institute of Agricultural Development in Transition Economies (IAMO)

The Leibniz Institute of Agricultural Development in Transition Economies analyses economic, social and political processes of change in the agricultural and food sector, and in rural areas. The geographic focus covers the enlarging EU, transition regions of Central, Eastern and South Eastern Europe, as well as Central and Eastern Asia. The IAMO performs basic and applied research in the agricultural and food sector as well as rural areas of the formerly centrally planned economies of Europe and Asia against the context of international developments. Based on research results, the staff develops recommendations for sustainable development in the agricultural and food sector and for promoting rural areas.

Contact

Leibniz Institute of Agricultural Development in Transition Economies (IAMO)
Theodor-Lieser-Str. 2
06120 Halle (Saale)
<https://www.iamo.de/>

Prof. Dr. Thomas Glauben

glauben@iamo.de

Leibniz Institute for Regional Geography (IfL)

The research carried out at the Leibniz Institute for Regional Geography is concerned with spatial structures and current developments that have a spatial impact in Europe, as well as with the theoretical and historical foundations of Regional Geography. Under the heading "New Geographies of Europe" the researchers analyse ongoing processes, particularly in Central and Eastern Europe. An important area of the institute's work is the presentation of research findings for specialist and more general audiences.

Contact

Leibniz Institute for Regional Geography (IfL)
Schongauerstraße 9
04328 Leipzig
www.ifl-leipzig.de/

Prof. Dr. Sebastian Lentz

s_lentz@ifl-leipzig.de

Institute of Geography at Friedrich Schiller University Jena (IfG)

Within the Institute of Geography at Friedrich Schiller University the research activities of the Department of Economic Geography cover four interrelated topics: urban economies and neighbourhood development, knowledge-based urban and regional development, global business interconnections and regional development dynamics as well as geographic real estate market research. The institute's research is carried out along three lines: "empirical analysis", "theoretical-conceptual development", and "derivation of recommendations for action".

Contact

Institute of Geography (IfG)
Friedrich Schiller University Jena
Löbdergraben 32
07743 Jena
<http://www.geographie.uni-jena.de>

Prof. Dr. Sebastian Henn

sebastian.henn@uni-jena.de

© Henn



The benefit of EEGA to me is to exchange inspiring ideas about future collaborations with colleagues in related fields...

Sebastian Henn, Research Area Coordinator and Member of the Steering Committee

Aleksander Brückner Center for Polish Studies (ABZ) at Martin Luther University Halle-Wittenberg and Friedrich Schiller University Jena

The Aleksander Brückner Center for Polish Studies is dedicated to the interdisciplinary research of both historical and present-day developments in Polish politics, society, language, and culture. It is a cooperative project of Martin Luther University, Halle-Wittenberg, and Friedrich Schiller University, Jena. The Aleksander Brückner Center pursues an intensive exchange with numerous research institutes in Poland and in other countries that have been closely connected with Poland in the past and today. This serves to provide a foundation for the development of a multi-perspective view of Poland linked into its European and international contexts.

Contact

Aleksander Brückner Center for Polish Studies (ABZ)
Martin Luther University Halle-Wittenberg
Emil-Abderhalden-Str. 26-27
06108 Halle (Saale)
<http://www.aleksander-brueckner-zentrum.org>

Prof. Dr. Yvonne Kleinmann

yvonne.kleinmann@geschichte.uni-halle.de

Max Planck Institute for Social Anthropology (MPI)

23

The Max Planck Institute for Social Anthropology is one of the world's leading centres for research in socio-cultural anthropology. The guiding research areas are: the development of anthropological theory and comparative research into current social transformation processes, include those of urgent social relevance. The Department „Resilience and Transformation in Eurasia“ specialises in regions of Europe and Asia which were until recently socialist, or which remain so to this day. It has investigated the consequences of the privatization of collective and state farms after socialism, along with a range of other topics in economic anthropology. It has also organised large-scale comparative investigations of the religious field in post-socialist conditions. Particular strengths lie in East-Central Europe, the Caucasus, Central Asia, Vietnam and Japan.

Contact

Max Planck Institute for Social Anthropology (MPI)
Advokatenweg 36
06114 Halle (Saale)
<http://www.eth.mpg.de/>

Prof. Dr. Chris Hann

hann@eth.mpg.de

24 Centre for Area Studies (CAS) at Leipzig University

The Centre for Area Studies is an interdisciplinary and inter-departmental research institute at the Faculty of Social Sciences and Philosophy of Leipzig University. Placing a special emphasis on the academic collaboration between area studies and other disciplines in social sciences and humanities, CAS facilitates transregional and global approaches. The Centre promotes an interdisciplinary consolidation of teaching and research agreements between the involved studies. Furthermore, it coordinates a great number as well as vast array of third-party funded research projects and activities. The Centre is directly linked to the Graduate School "Global and Area Studies", which is part of Leipzig University's Research Academy, a special programme for PhD candidates.

Contact

University of Leipzig
Centre for Area Studies
Nikolaistraße 6–10
Strohsackpassage, 5th floor
04109 Leipzig
<http://cas.sozphil.uni-leipzig.de/welcome/>

Prof. Dr. Matthias Middell
middell@uni-leipzig.de

© Middell/European University,
St. Petersburg



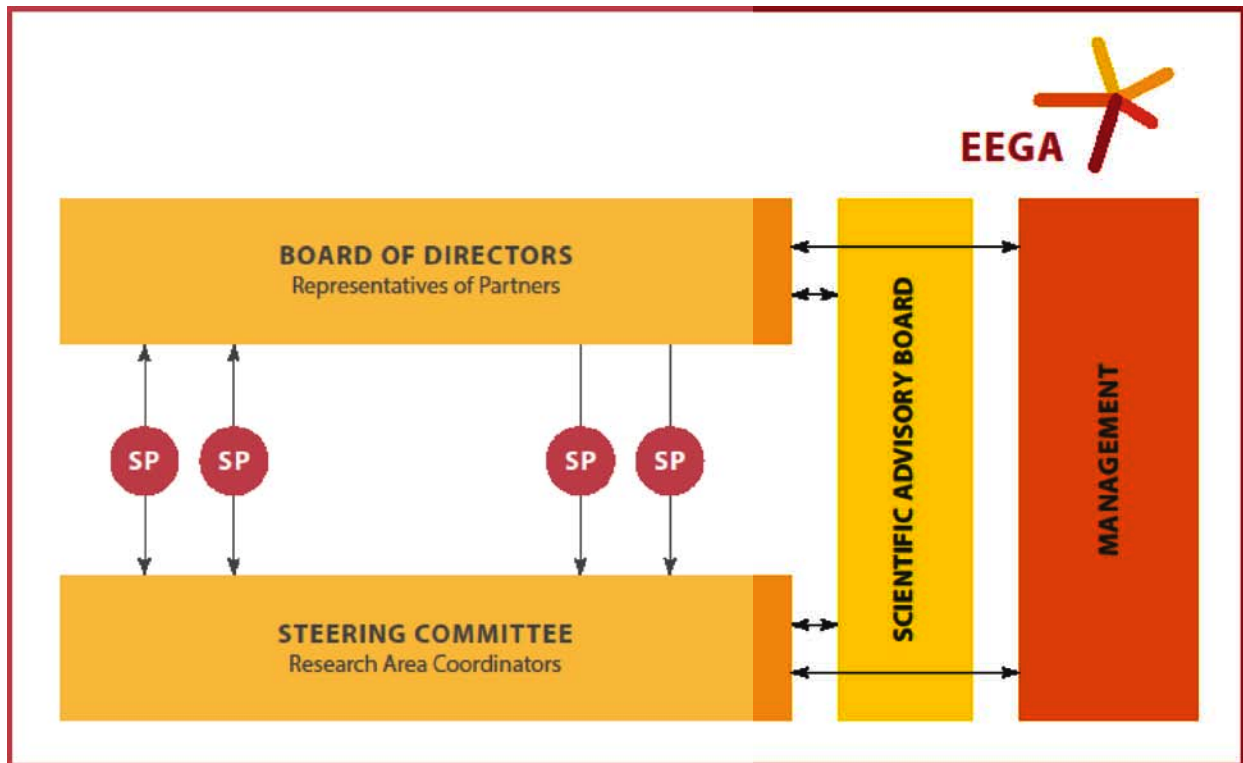
The benefit of EEGA is to meet people who share an interest in innovative research about the transregional connectedness of the societies between Germany and China...

Matthias Middell, Research Area Coordinator and Spokesperson of the Steering Committee



07 **Structural Chart**

26



↑

© IfL

Speakers:

- SP** Prof. Dr. Sebastian Lentz (Leibniz Institute for Regional Geography)
- SP** Prof. Dr. Erich Schröger (Pro-rector for research and the promotion of young academics of Leipzig University – speaker since May 2017)
- SP** Prof. Dr. Matthias Schwarz (Pro-rector for research and the promotion of young academics of Leipzig University – speaker until April 2017)

Spokespersons of the Steering Committee:

- SP** Prof. Dr. Matthias Middell (Centre for Area Studies/ Global and European Studies Institute)
- SP** Prof. Dr. Sebastian Lentz (Leibniz Institute for Regional Geography)

Contact

Leibniz ScienceCampus
Eastern Europe – Global Area (EEGA)
c/o Leibniz Institute for Regional Geography
Schongauerstraße 9
04328 Leipzig

<http://www.leibniz-eeega.de>
<https://www.ifl-leipzig.de/de/kontakt.html>

Coordination

Lena Dallywater, M.A.

Leibniz Institute for Regional Geography
Phone +49 341 600 55-266
L_Dallywater@ifl-leipzig.de

Speakers

Prof. Dr. Sebastian Lentz

Leibniz Institute for Regional Geography
S_Lentz@ifl-leipzig.de

Prof. Dr. Erich Schröger

Pro-rector of Leipzig University
schroger@rz.uni-leipzig.de

Prof. Dr. Matthias Middell

Leipzig University, Centre for Area Studies
Middell@uni-leipzig.de

Imprint

Leibniz ScienceCampus
Eastern Europe – Global Area (EEGA)
c/o Leibniz Institute for Regional Geography
Schongauerstraße 9
04328 Leipzig

Phone +49 (0) 341 600 55-266
Fax +49 (0) 341 600 55-198
leibniz-eeega@ifl-leipzig.de

Eingetragen im Vereinsregister des Amtsgerichts Leipzig,
Nr. 1238
Vorstand: Prof. Dr. Sebastian Lentz
Umsatzsteuer-ID: Nr. DE 811 549 191

Editorial responsibility
Content: Lena Dallywater; Raphael Brüne; Sebastian
Lentz; Melanie Mienert
leibniz-eeega@ifl-leipzig.de
Phone +49 (0) 341 600 55-266

Design: Metronom | Agentur für Kommunikation und
Design GmbH Leipzig
www.metronom-leipzig.de